

Introduction to the Internet

The **World Wide Web (WWW)** enables your personal computer to access hundreds of millions of documents (stored on tens of thousands of computers) containing information important to you. Think of the WWW as the world's largest public library, a place to visit and tap into information on everything! The WWW also offers social networks, support groups, entertainment, education, news and shopping.

To connect to your computer to the internet from your home, you'll need to have a contract with an **ISP**, an (**Internet Service Provider**). Unless you are using dial-up, your ISP will provide modem that is compatible with their system. You may need to purchase a router too.

Here at the clubhouse, Comcast is our ISP for the club computers and the Wi-Fi hotspot. To use your computers built-in wireless adapter you have to be close to the source of a wireless signal. This is similar to the way a cordless phone works.

Another wireless technology is a USB "air card", which you purchase from an ISP and then it works of a cell tower like a cell phone. Cell phone companies also offer portable hotspots and as we saw at one of the demos even your iPhone can be turned into a portable hotspot..

Browser

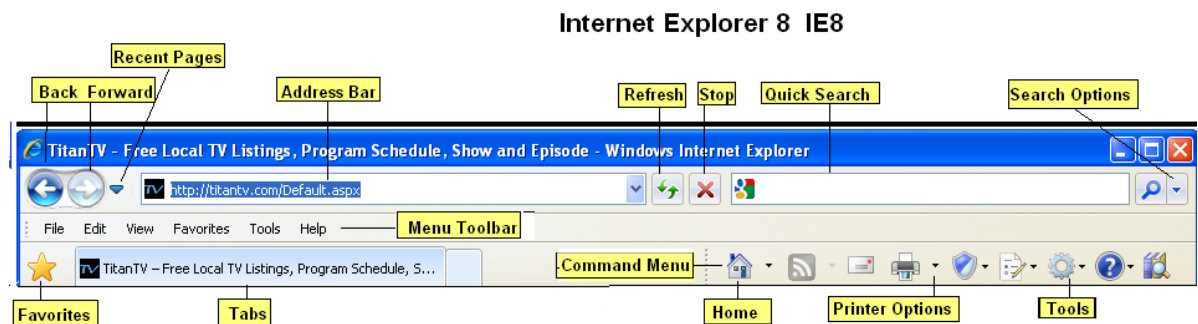
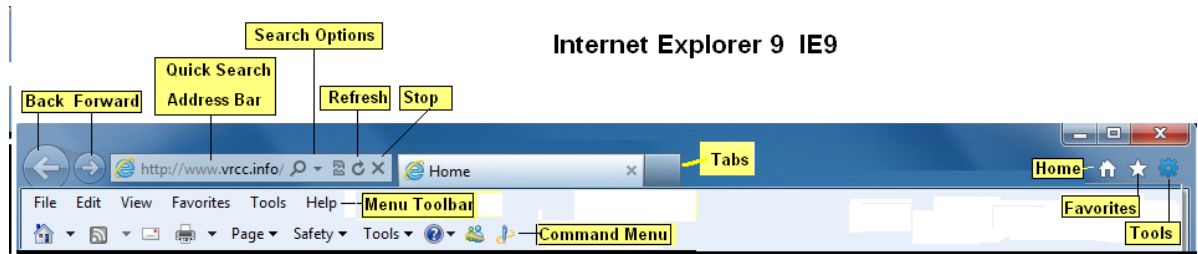
A web browser is a free software program that allows you, as a client, to access, view, and explore sites on the World Wide Web (Web). There are many browsers to choose from, we are going to use Microsoft's Internet Explorer (IE), but there are others like FireFox, Opera and Google Chrome that may be more to your liking.



Microsoft Internet Explorer (IE)

To start Internet Explorer, locate the blue "e" icon on your taskbar and click it with the mouse to activate Internet Explorer and connect to the Internet. If you don't see the **IE** icon on your **Desktop** or taskbar, click **Start**, select **Programs**, then locate and click the **Internet Explorer** group icon.

We have two versions of IE in the classroom, 8 and 9. We've customized these to have the toolbars to make things looking similar. Yours might look different.



Navigating the web

The primary method of navigation entering an address or clicking on a (hyper) link .

When a company, organization, government, or individual has information that they want to share with the WWW they can purchase the rights to a **domain name** and then set up a web server. The web server can be accessed by entering the domain name in your **web browser**. Examples of domain names, www.jcpenney.com, www.google.com, www.vrcc.info . The domain name is always a part of the web address or Uniform Resource Locator URL. The web address may also contain a path to a document on that domain server.

Every domain name ends with a top level domain name suffixes. The more common domain suffixes are **.co, .com, .edu, .gov, .net, .info, .ltd, .org**, They may be followed by a country code such as **.ch, .uk, .us, .ye**.

The domain name's location in the web address comes between the `http://` and the next `/` in the address. It usually comes first, followed by a `/` and then the web document pages name. In the following example **google.com** is the domain name.

`http://www.google.com/advanced_search`

However there is another convention that lists a “subdomain” first followed by a dot (.) and then the domain name. In the example below **yahoo.com** is the domain name

`http://www.search.yahoo.com/`

This is an important distinction when deciding which links to follow. For example if you were hunting for an iTunes download for your iPod, you would be safer going to <http://downloads.apple.com> than going to <http://apple.downloads.com>.

HTTP/HTTPS

In our address bar we might see **http://** **https://** or **ftp://** in front of a web address. The browser will put http in the address bar even if we didn't type it. **Http** stands for hyper text transfer protocol. **Https** stands for SECURE hyper text transfer. You might also see **Ftp**. **Ftp** is file transfer protocol. Whenever you are entering personal information such as login in names, credit card numbers, passwords, etc you should see **HTTPS** in the address bar. If you don't see that, you should not be dealing with this website. Note that a pop-up doesn't have a web address bar. When a website is secure, there are two protection methods being employed. One is that the transmission between the website is being scrambled, so that it is not easy to see the information passing through the internet highway. Another thing is that there will be a security certificate from a third-party saying for example that Amazon is Amazon. There are only a few entities that can issue certificate.



There is a problem with this website's security certificate.

If you get any notification that there is a problem with the certificate, stop, do not proceed. This could just be a temporary problem with a server being down somewhere or it could be an attempt to steal your information. If you are getting it everywhere you go, check the time/date on your computer.

Always check for the https, and identify the domain before entering confidential information.

Exercise.

Enter www.google.com in the address browser and press **Enter**

Searching and Using Links

There are many ways to search the internet. Just enter a few keywords into the search box and you are on your way. The search engine will provide you with a list of results. **The order of the results does not indicate their reliability. Spammers often manipulate the search engines, to lead you to counterfeit or even malicious sites.**

1. Perhaps the easiest is to just enter a few keywords in the quick search bar.
2. Navigate to a search engine page, such as www.google.com or www.search.yahoo.com and enter your keywords. This gives you many more search options.
3. Using advanced search pages such as www.google.com/advanced_search to narrow down your search.



Hyperlinks

Hyperlinks, also called links, are a convenient way of navigating the web. Whenever your mouse is over a hyperlink it turns into a hand. Clicking on a link takes you to a new page. Hyperlinks can be associated with text or pictures. Look for the hand as you hover.

Exercise:

In the search bar enter **Movies Vero Beach FL**
Click on the link **Movies for Vero Beach, FL**

Links not working

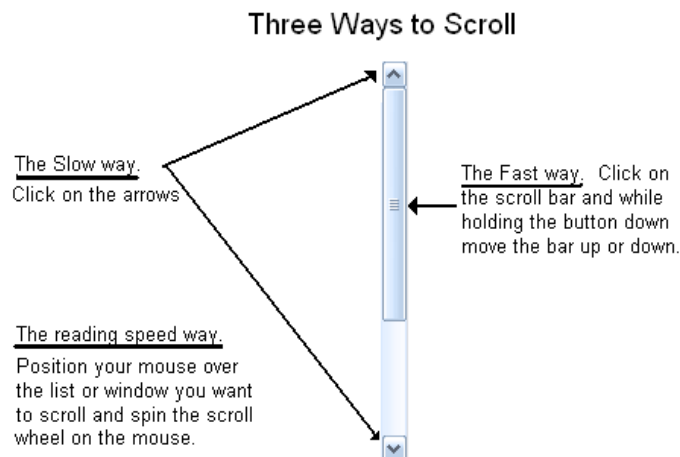
Many websites were designed to use pop-up dialog boxes. Pop-ups then were exploited by criminals to trick the unsuspected users into divulging personal information. So all our browsers should disable pop-ups by default. When a website tries to display a popup IE will display a message and you can decide to allow the popup. If you click on a link and nothing happens, look for a yellow message on the screen that says a pop-up has been blocked. If you have toolbar add-ins, the popup message may be suppressed and instead an icon on the toolbar may light up indicating a popup has been blocked.

Another reason you may not see anything, is that the link has opened another tab. So if you are clicking on a link and there is no indication that anything is being loaded, check for a blocked pup-up or a new tab.

Even if you trust the website and allow pop-ups from a website, **NEVER EVER** enter confidential information such as a password or a credit card number in a pop-up.

Scrolling

As you can see we have more results than will fit on the screen. We can see the results by scrolling. **Scrolling** is a way to “move” a long Web page (or any other document) up and down on your monitor, or left and right, if the Web page is too wide for your monitor. A vertical bar on the right edge of your monitor is the **Vertical Scroll Bar**. A horizontal bar three (3) bars up from the bottom of your monitor is the **Horizontal Scroll Bar**. Each scroll bar has a black triangle at its beginning and at its end. There are multiple scrolling techniques you can employ, below are three methods.:



You can also scroll from the keyboard with your **Page Up**, **Page Down** and cursor arrow keys.

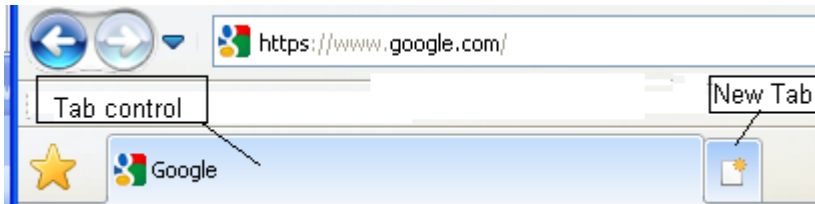
Magnifying a page

Another use for the scroll wheel is to change the magnification of the page.

1. Click on the content area of the browser
2. Hold down the **Ctrl** key while rolling the scroll wheel on your mouse
3. The magnification level will display on the status bar

The Tab Control

IE is a tabbed browser. That means that the content area can display multiple pages in different tabs in the same window. The right most tab is the new tab control. You can click on this to browse elsewhere.



When doing banking or shopping its best to only have one tab open.



Back Forward, Recent pages control

Another navigational aid is the back and forward button control. The back button takes you back to the previous page. If you back up, the forward button will be enabled so that you can undo the backup. The **recent pages** arrow lets you step back to a specific page. Sometimes the back button won't work and you get stuck in a website and can't get out. The recent pages button can be used to step out of the page. If you have IE9, the recent pages icon is not visible and instead you right click on the back and forward buttons to get the list of specific web pages.



The Refresh button

If a page failed to load, hitting the refresh button will cause the page to reload.



The stop button

If a page is taking to long to load, there is a stop button next to the refresh button to stop the load process.




Setting a home page

When **IE** starts, it opens and displays a web page, known as your **homepage****. If you click the little house icon at any time you will always return to the **IE homepage**. .. Here in the lab, <http://vrcc.info> is our homepage. Your home page can be changed to any web page you wish. You can even have multiple homepages opening in different tabs but this can make starting a browser session very slow to start. A better choice would be to use a **Favorite** for your secondary page. We'll be discussing **favorites** in the next section.

The IE 9's combined search/address bar disabled the easier ways to set a homepage obsolete. So we are going to do this the hard-way.

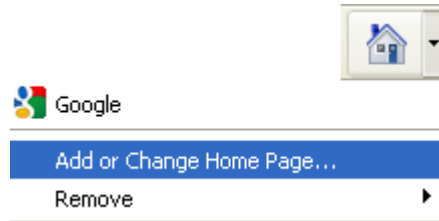
** Note if you are using AOL, AOL might hijack your browser when you first start and you don't start in the homepage, but rather a "welcome page" on your local machine..

Exercise:

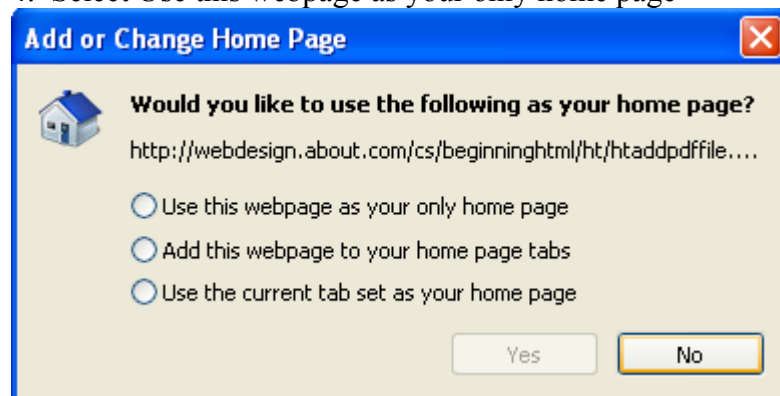
1. Open Internet Explorer.
2. Navigate to the webpage you want to set as the home page. For now using the address bar, type in **Yahoo.com**
3. Click the **Tools** button, , and then click **Internet options**.
4. In the **Homepage** section of the **General** tab, click on **Use current**.
5. Click **OK**.

Exercise: Changing the Home page in IE 8 or IE9 with Command Toolbar enabled

- 1, Using the address bar, navigate to **Yahoo.com**
2. Select the options arrow next to the Home button



- 3: Select Add or Change Home page
4. Select Use this webpage as your only home page



5. Now when you press home it will take you to google.com



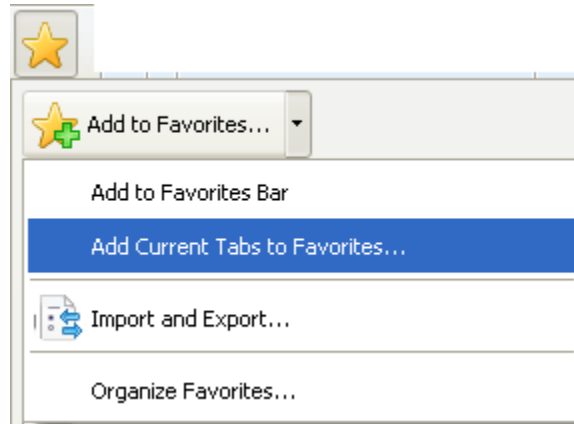
Favorites

In addition to setting your home page, you may also want to create a list of favorite websites, some other browsers call this a bookmark. Creating favorites helps you avoid

typo-squatters, who lie in wait hoping that you will mistype the URL and visit their site instead of the site you hoped to reach. Typo-squatters set-up domains that are similar to a real website, just waiting for the poor typist to visit the fake website and divulge their information. Creating shortcuts allows you to return to a website without needing to retype the address again.

Exercise: Adding a Favorite

1. Navigate to **www.vrcc.info**




2. Click on the Favorites Star
3. Click on Add to Favorites



Printing

Printing from the internet is a bit tricky. Unless you are viewing a PDF file, about 60% of the sites you visit are not WYSIWYG. So if you just click the print icon in the toolbar you are likely to print something that is not useable or spew out reams of garbage. I

It is best to use the **print preview** to get a useable printout. The print preview can be found in the **File Menu**, if the menu is displayed. The print preview can be found in the printer options dropdown next to the printer icon, if the **Command Toolbar** is displayed.

 In IE9 the printer options are in the Tools menu

If you select the text you want to print, the print preview has an “as selected on screen” option to just print the selected text or pictures.

If the print preview is not giving you something useable, inspect the **content area** for a **printer icon** or a **Print friendly** link. The website designers often embed a Printer icon or a “Printer friendly” button in the content area of the web page when they know that page won’t print correctly from a browser. .

You might even need to copy the selection to a word processing application in order to get a usable print out.

Quick Search providers.

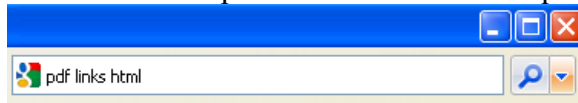
In IE8 there is a separate quick search box over on the upper right hand corner. In IE9 this option is combined

Video:

using the one box <http://www.youtube.com/watch?v=njOZYxNytQk>

Exercise: Add Wikipedia as your default quick search provider

1. Click on the search options arrow next to the quick search box



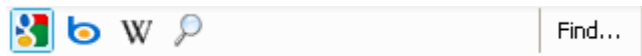
If you are on IE9 the search options arrow is in the address box

2. Click on **Find More Providers**
3. Hold your mouse close to the scroll bar until the scrollbar until you see Wikipedia.
4. Click on **Wikipedia**
5. Click on **Add to Internet Explorer**
6. Check on **Make this my default search providers**
7. Click **Add**

Exercise: Search using the Quick Search

In the quick search area type **golf** and press enter

Now click on , the Wiki Icon, and select another provider



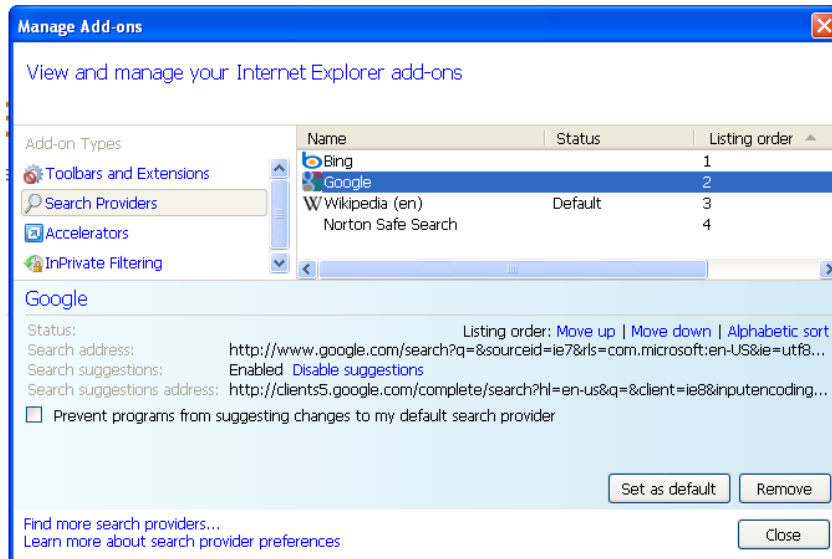
And then click on **Find**.



Changing Search Providers

From the Tools menu select Manage Add Ons

Select Search Providers



Adding and removing Toolbars

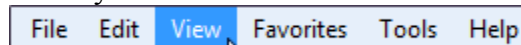
There are many kinds of toolbars, some come standard, others are provided by third parties. Many of the computers I've seen come into the lab are so loaded with toolbars that there is very little room for the actual content. The method to access the toolbar varies a little in the various versions of IE.

IE8

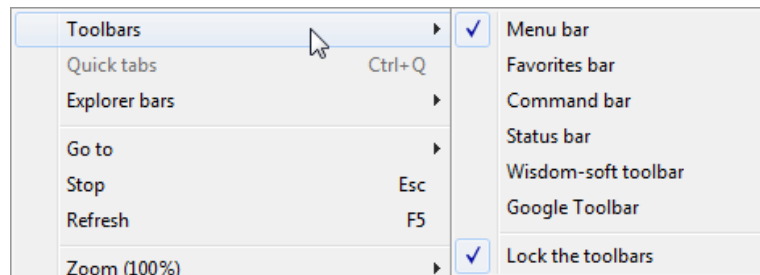
1. Click on the Tools Icon
2. Click on Toolbars

IE9 and IE8

1. To show the Menu bar and access your toolbars, first press the Alt key.
2. Click the View tab on your Menu bar.



3. Scroll over **Toolbars** to access the different bars and click which bars you want to add or remove to your browser.



Alternate method

In both IE8 and IE9, right click just past the last tab to bring up the toolbar sub menu



In Private Browsing Ctrl + Shift + P

If you are sharing a computer with anyone there are times when you might not want to leave traces that you were there. For example if you are hunting for a special gift you might hide your browsing history. **In Private Browsing** is the tool that lets you do browse without leaving a trail..

In IE8 you find this in the privacy shield options. In IE9 you find this in the Tools menu, in both you can reach this with the short cut key **Ctrl+ Shift + P**

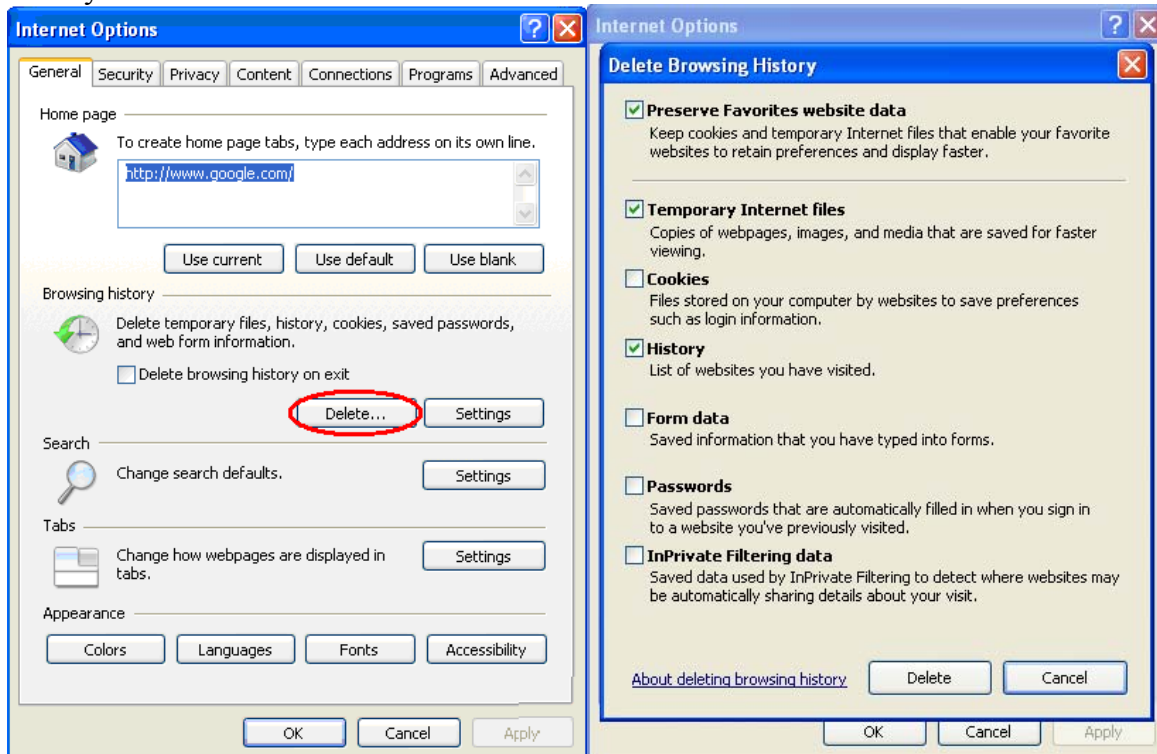


Internet Options

The Internet Options offers many types of controls. The Internet Options screen is accessed from the **Tools** menu.

Deleting the History from the Internet Options Screen.

IE allows you to delete portions of your history. You may be instructed to delete your history if a website is acting up. From the **Tools** menu you select **Internet Options** Click on the **Delete** button in the 'Browsing History' section on the **General** tab. Check the items you want to delete and then click on **Delete** button.

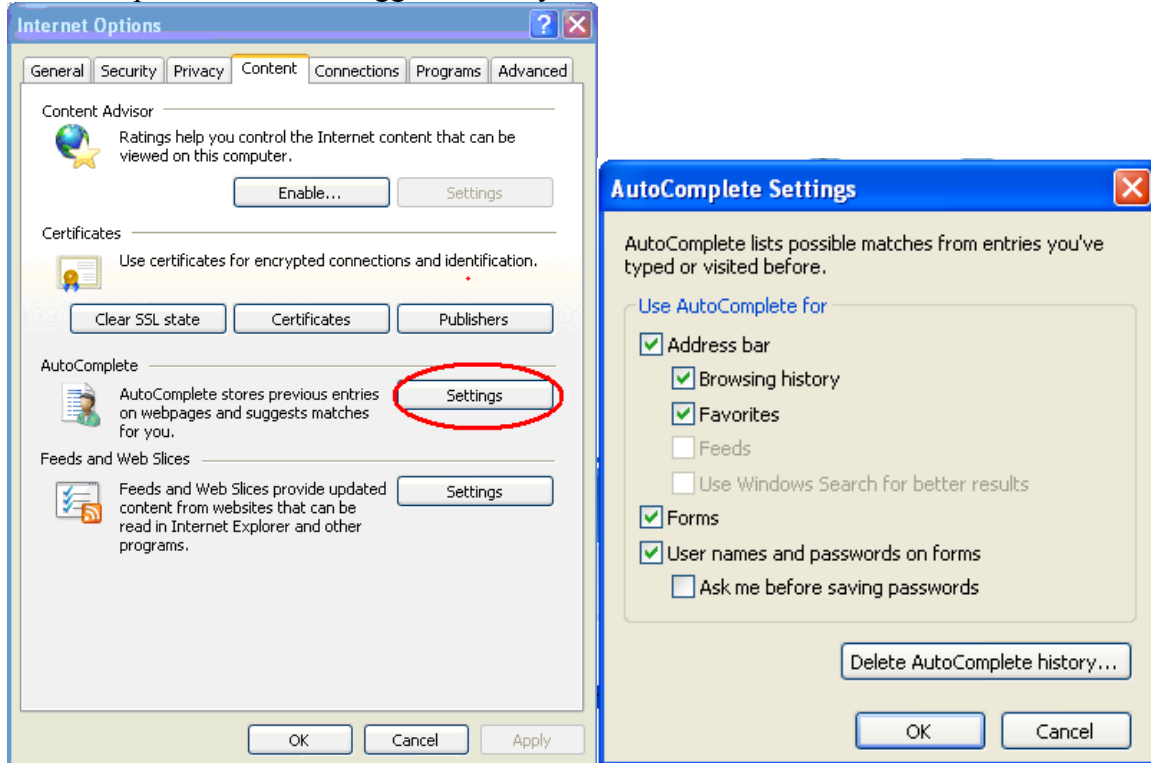


Deleting history

Note the **Form Data** is what is stored when AutoComplete is on. Auto Complete can settings can be accessed from the **Content** tab.

Changing the AutoComplete settings

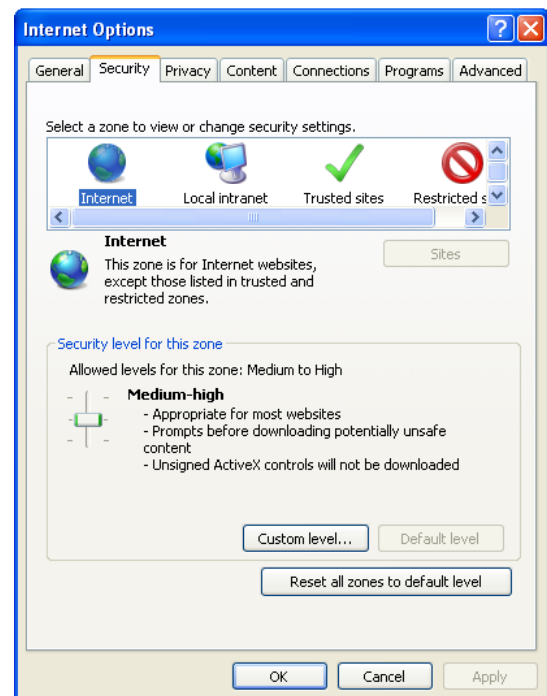
Auto complete aids offers suggestions as you enter data into webforms.



AutoComplete settings dialog

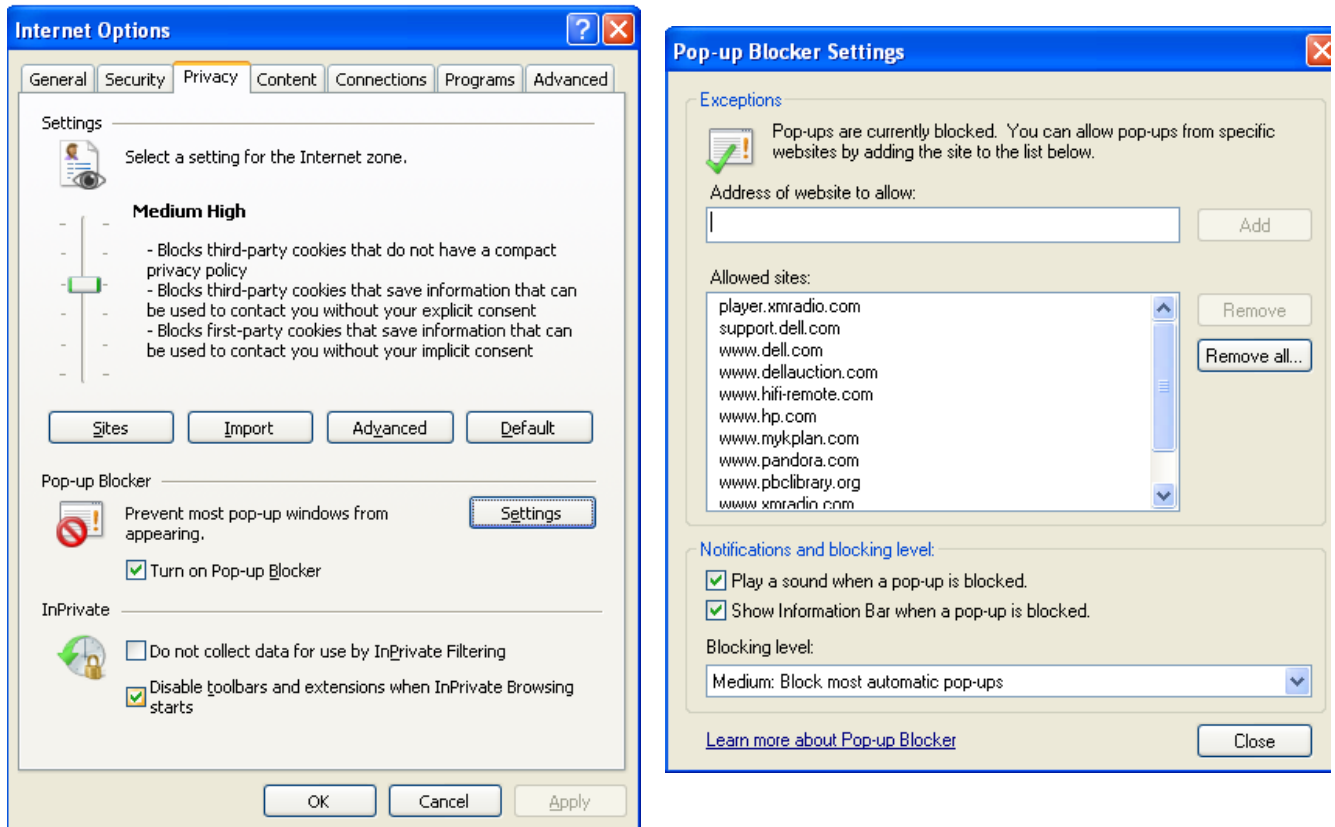
Adjusting your security settings

The **security tab** for the internet allows you to set the level of protection you want. Medium high is a nice setting in that it allows most applications to run but still provides some protection.



Privacy Tab

The Privacy Tab is where we set the pop-up blocker. If you are receiving pop-ups, check this option. If it is turned on check to the settings to see if offending site is on the allowed settings.



If you are still getting pop-ups chances are you've picked up some spyware. Run a complete scan of your system.

INTERNET SECURITY

As wonderful as the web is, it is also a very dangerous place. You need to have a full arsenal of tools to guard yourself. You need antiviral software, antispysware, spam blocker, a firewall. Although Windows does offer some protection, you really would be wise to get a third party internet security package of some sort before you start surfing the web.

Connecting to a Wireless Network



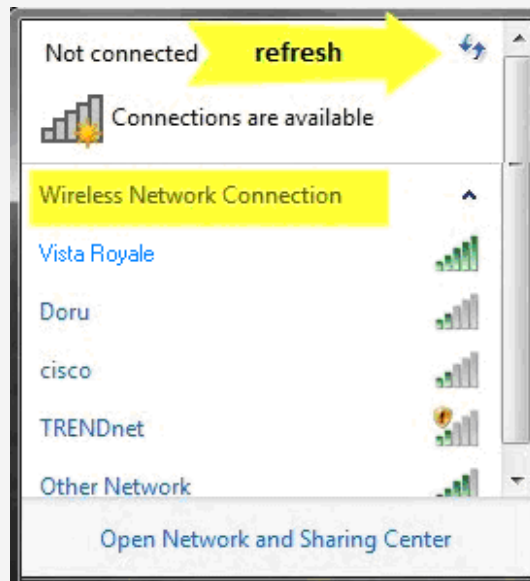
In the notification area you should see a wireless network icon. **Click on it**



If you don't see an antenna icon in the hidden or visible notification area, the Wi-Fi adapter may be turned off. On a laptop, there is usually a special key combination to turn the Wi-Fi adapter on and off. Look at the keyboard until you find an icon that looks like an antenna emitting a radio signal or something that says Wi-Fi. Usually, you have to press this in conjunction with a **Fn** key to turn the Wi-Fi adapter. Consult the laptop documentation if you can't find the keys to turn the Wi-Fi adapter.



When you click on the wireless network icon, a window with available network connections will open. You have a list with all the wireless networks which Windows has detected. To refresh the list of available networks, click on the button highlighted in the screenshot below.

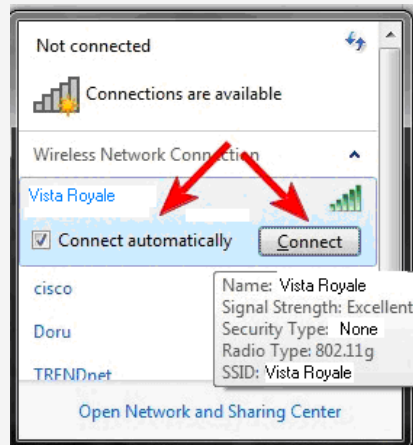


You can scroll down through the list of available networks. If you leave your mouse cursor over a network for a second, you will see more details about it. Windows will show the following: network name, signal strength, the type of wireless security used (if any) and its Service Set identifier (SSID).

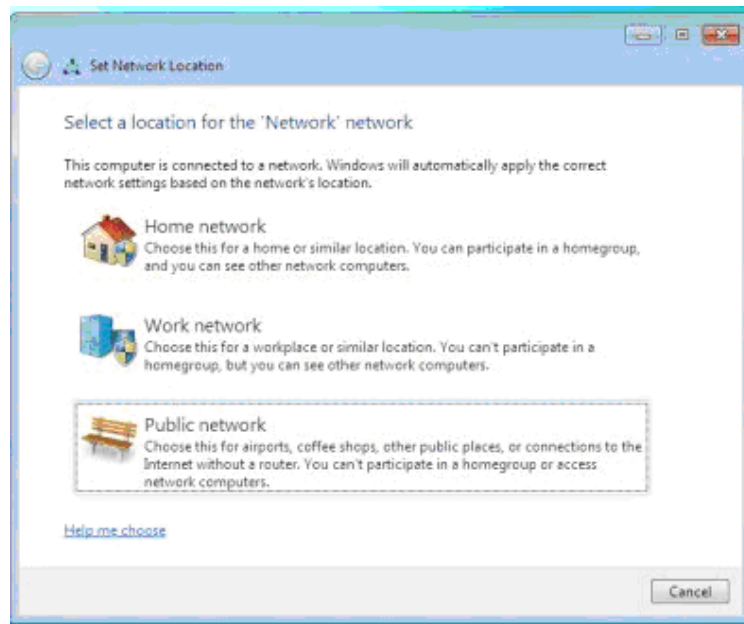
Once you've decided on which network to connect to, click on it. If you plan to use that network in the future, you can check the box that says *'Connect automatically'*. This way, when you start your laptop next time, in the same area, it will automatically connect to this

wireless network without requesting any manual intervention. Next, click on the *Connect* button.

NOTE: be cautious with wireless networks which have no security enabled. They can be used to steal personal data. If you connect to such networks make sure your security solutions are turned on.



Since Vista Royale is an unsecured hot spot you will not be asked to enter the security key. Being unsecured, the traffic that you send over this network can be visible to others. On Windows 7 you will be asked to set a Network location. For an unsecured network you should indicate it's a Public Network



Conclusion.

The internet is a fun place to visit but take precautions when you go online.